



Monthly Bulletin
June
2018

The WSSPC Annual Meeting, the National Earthquake Program Managers Meeting (NEPM), and the National Emergency Management Association (NEMA) Earthquake Subcommittee met in Seattle the first week of May 2018.

WSSPC Annual Meeting

The WSSPC Annual Meeting began with an Awards Luncheon to honor recipients of the 2018 WSSPC Awards in Excellence.

- Lifetime Achievement Award—Donald Thomas, The Center for the Study of Active Volcanoes
- Awards in Excellence: Non-Profit Agency Efforts—USRC Earthquake Rating System (accepted by Evan Reis)
- Awards in Excellence: Use of Technology—USGS ShakeMap Scenario Suite (accepted by Eric Thompson)



Left Image: Evan Reis (Executive Director and co-founder, USRC) and Pete McDonough (WSSPC Board Chair)

Center Image: Kevin Richards (Nominator, HIEMA), Patti Sutch (WSSPC Executive Director), Donald Thomas (Lifetime Achievement Award Winner) and Pete McDonough (WSSPC Board Chair)

Right Image: Eric Thompson (Research Geophysicist, USGS) and Pete McDonough (WSSPC Board Chair)

During the WSSPC Annual Meeting May 4 policies 18-1, 18-2, 18-3, and 18-4 were approved and adopted; they are posted on the WSSPC website at <https://www.wsspc.org/public-policy/adopted-recommendations/>.

Draft policies for 2019 are also posted on the website and are ready for committees to start the review process: <https://www.wsspc.org/public-policy/2019-wsspc-draft-policy-recommendations/>.

WSSPC members voted in the following Board members for a 2-year term starting December 1, 2018:

- Steve Masterman (AK-GS)
- John Metesh (MT-GS)
- Caleb Cage (NV-EM)
- Brad Richy (ID-EM)

WSSPC BOARD OF DIRECTORS 2017-2018
PETER McDONOUGH, CHAIR
KAREN BERRY
MARK GHILARUCCI
STEVE MASTERMAN
JOHN METESH
BRAD RICHY

PATRICIA L. SUTCH
Executive Director
ERIN MOMMSEN
Program Manager

WSSPC MEMBERS
ALASKA • AMERICAN SAMOA
ARIZONA • BRITISH COLUMBIA
CALIFORNIA • COLORADO
GUAM • HAWAII
IDAHO • MONTANA
NEVADA • NEW MEXICO
NORTHERN MARIANAS • OREGON UTAH • WASHINGTON
WYOMING • YUKON

Western States Seismic Policy Council
801 K Street, Suite 1236
Sacramento, CA 95814
Phone: 916-444-6816
Fax: 916-444-8077



We develop seismic policies and share information to promote programs intended to reduce earthquake related losses.



A non-profit earthquake consortium for the western states

Monthly Bulletin
 June 2018

National Earthquake Program Managers Meeting

The week started off with Earthquake Program Managers 101, designed as an introductory session for new state earthquake program managers and a refresher for returning earthquake program managers. The session covered external partner roles and relationships, resources, grants managements, successful projects, and outreach. David Javier, Mike Mahoney, Andrew Herseth, and Jonathan Foster provided FEMA updates including timelines and upcoming earthquake planning/exercises, and introduced new personnel.

Twenty-one presentations were given by states, consortia, and FEMA Regions to highlight their ongoing work.

FEMA provided training on [P-1000 Safer, Stronger, Smarter: A Guide to Improving School Natural Hazard Safety](#). The Guide provides up-to-date, authoritative information and guidance that schools can use to develop a comprehensive strategy for addressing natural hazards.

Field Committee Hearing: “Earthquakes Mitigation: Reauthorizing the National Earthquake Hazards Reduction Program”

The U.S. House of Representatives Committee on Science, Space, and Technology held a field hearing on Thursday, May 31 in Huntington Beach, California. Representatives Dana Rohrabacher, Mark Takano and Jerry McNerney were in attendance. Rep. Rohrabacher made the opening statements and introduced the purpose of the hearing: to review the federal National Earthquake Hazards Reduction Program (NEHRP), examine the strengths, weaknesses, and challenges of the 40-year interagency effort, and to receive recommendations for future reauthorization of the program.

Speakers:

- Dr. Steven McCabe, Director, National Earthquake Hazards Reduction Program; Group Leader, Earthquake Engineering Group, National Institute of Standards and Technology (NIST)
- Dr. Stephen Hickman, Director, USGS Earthquake Science Center, U.S. Geological Survey
- Dr. Frank Vernon, Research Geophysicist, Institute of Geophysics and Planetary Physics, Scripps Institution of Oceanography, UC San Diego
- Mr. Chris D. Poland, Consulting Engineer; NIST Community Resilience Fellow
- Mr. Ryan Arba, Branch Chief, Earthquake and Tsunami Program, California Governor’s Office of Emergency Services

Watch the hearing [here](#).

WSSPC BOARD OF DIRECTORS 2017-2018

- PETER McDONOUGH, CHAIR
 KAREN BERRY
 MARK GHILARDUCCI
 STEVE MASTERMAN
 JOHN METESH
 BRAD RICHY

- PATRICIA L. SUTCH
Executive Director
 ERIN MOMMSEN
Program Manager

WSSPC MEMBERS

- ALASKA • AMERICAN SAMOA
 ARIZONA • BRITISH COLUMBIA
 CALIFORNIA • COLORADO
 GUAM • HAWAII
 IDAHO • MONTANA
 NEVADA • NEW MEXICO
 NORTHERN MARIANAS • OREGON UTAH • WASHINGTON
 WYOMING • YUKON

Western States Seismic Policy Council

801 K Street, Suite 1236
 Sacramento, CA 95814
 Phone: 916-444-6816
 Fax: 916- 444-8077



We develop seismic policies and share information to promote programs intended to reduce earthquake related losses.

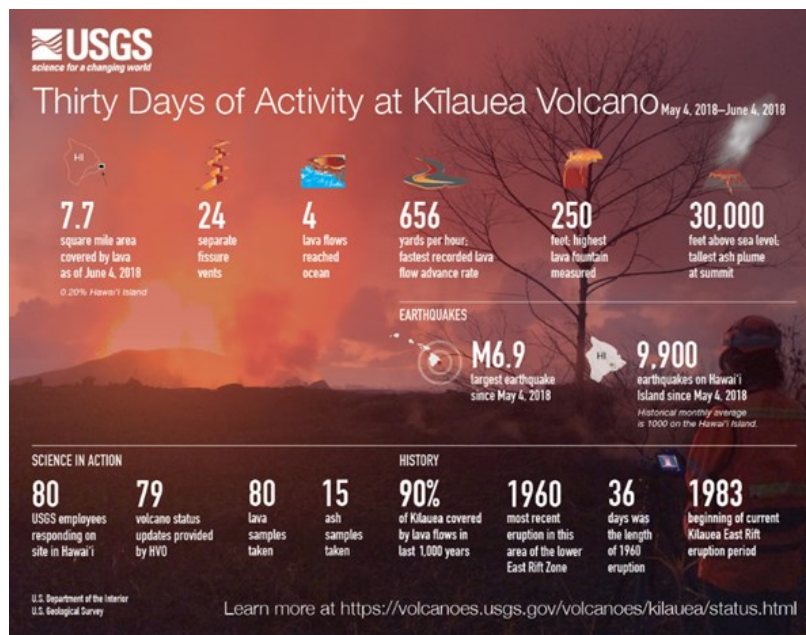


A non-profit earthquake consortium for the western states

Monthly Bulletin
June 2018

Hawai'i Volcano and Earthquake Activity

Late in the afternoon, on Thursday, May 3rd, the Kilauea Volcano erupted in the Lower Puna district of Hawai'i (known as 'The Big Island'). It is the youngest and southeastern-most volcano on the Island of Hawai'i. On May 4th a magnitude 6.9 quake occurred near the Leilani Estates Subdivision (relatively close to Kilauea). As of the first week of June approximately 100 structures including 87 homes have been destroyed by the East Rift Zone Eruption at Kilauea. Since the onset of the eruption, 24 fissures have emerged and the USGS has recorded thousands of earthquakes in and around the Kilauea Volcano. The past month's volcanic activity was captured on the following USGS infographic:



WSSPC BOARD OF DIRECTORS 2017-2018

PETER McDONOUGH, CHAIR
KAREN BERRY
MARK GHILARDUCCI
STEVE MASTERMAN
JOHN METESH
BRAD RICHY

PATRICIA L. SUTCH
Executive Director

ERIN MOMMSEN
Program Manager

WSSPC MEMBERS

ALASKA • AMERICAN SAMOA
ARIZONA • BRITISH COLUMBIA
CALIFORNIA • COLORADO
GUAM • HAWAII
IDAHO • MONTANA
NEVADA • NEW MEXICO
NORTHERN MARIANAS • OREGON UTAH • WASHINGTON
WYOMING • YUKON

Western States Seismic Policy Council
801 K Street, Suite 1236
Sacramento, CA 95814
Phone: 916-444-6816
Fax: 916-444-8077

Follow the earthquake activity [here](#).

Find the most recent fissure and flow map [here](#).

References:

- <https://www.usgs.gov/news/k-lauea-volcano-erupts>
- <https://earthquake.usgs.gov/earthquakes/eventpage/us1000dyad#executive>
- https://www.huffingtonpost.com/entry/hawaii-residents-nowhere-to-go-as-lava-continues-to-erupt_us_5b087716e4b0fdb2aa5396f9



We develop seismic policies and share information to promote programs intended to reduce earthquake related losses.



A non-profit earthquake consortium for the western states

**Monthly
Bulletin
June
2018**

**WSSPC BOARD OF DIRECTORS
2017-2018**

PETER McDONOUGH, CHAIR
KAREN BERRY
MARK GHILARDUCCI
STEVE MASTERMAN
JOHN METESH
BRAD RICHY

PATRICIA L. SUTCH
Executive Director
ERIN MOMMSEN
Program Manager

WSSPC MEMBERS

ALASKA • AMERICAN SAMOA
ARIZONA • BRITISH COLUMBIA
CALIFORNIA • COLORADO
GUAM • HAWAII
IDAHO • MONTANA
NEVADA • NEW MEXICO
NORTHERN MARIANAS • OREGON
UTAH • WASHINGTON
WYOMING • YUKON

**Western States
Seismic Policy Council**

801 K Street, Suite 1236
Sacramento, CA 95814
Phone: 916-444-6816
Fax: 916-444-8077

2018 Bay Area Regional Community Resilience Summit

On May 16th the 2018 Bay Area Regional Community Resilience Summit with the theme of *Advancing Equity in Our Pursuit of Resilience* was held at San Francisco City Hall. Through panels and individual talks, speakers discussed how they were being resilient in their fields in the community.

Erin Mommsen, WSSPC Program Manager, attended the event and reported that Guest Speaker Daniel P. Aldrich’s keynote discussed *The Essential Role of Social Cohesion In Creating Resilient Communities*. The key to resilient communities is ties: bonding ties to build trust, bridging ties to get to know your neighbors and community, and linking ties to know who is in your network. Aldrich asked the room a question, “Do you know the first and last names of 10 of your neighbors?” Only 1 in 8 people across the country can say yes to this question. In order to be more resilient as a nation we have to know who is living right next to, above or below us.

Link to summit information: <http://www.empowersf.org/summit/>

Events and Conferences

Emergency Management Leaders Conference (EMLC)

June 12-13, 2018
Tampa, Florida
<http://emlc.us/conference-home/>

11th United States National Conference on Earthquake Engineering

June 25-29, 2018
Los Angeles, California
<https://www.11ncee.org/>
[WSSPC is a Cooperating Organization.]

AEG 61st Annual Meeting/13th IAEG Congress

September 17-21, 2018
San Francisco, California
<http://www.aegweb.org/mpage/iaeg18m>

NEMA Annual Forum

October 1-4, 2018
Savannah, Georgia
<https://www.nemaweb.org/index.php/forums-meetings/save-the-date>



**Monthly
Bulletin
June
2018**

Events and Conferences (cont.)

Earth Science Week
October 14-20, 2018

Great ShakeOut
October 18, 2018

FLASH National Disaster Resilience Conference
November, 7-9, 2018
Clearwater Beach, Florida
<http://flash.org/nationaldisasterresilienceconference/>

WSSPC Board Meeting
November 15, 2018
Sacramento, California

**WSSPC BOARD OF
DIRECTORS
2017-2018**

PETER McDONOUGH, CHAIR
KAREN BERRY
MARK GHILARDUCCI
STEVE MASTERMAN
JOHN METESH
BRAD RICHY

PATRICIA L. SUTCH
Executive Director
ERIN MOMMSEN
Program Manager

WSSPC MEMBERS

ALASKA • AMERICAN SAMOA
ARIZONA • BRITISH
COLUMBIA
CALIFORNIA • COLORADO
GUAM • HAWAII
IDAHO • MONTANA
NEVADA • NEW MEXICO
NORTHERN MARIANAS •
OREGON UTAH •
WASHINGTON
WYOMING • YUKON

**Western States
Seismic Policy Council**

801 K Street, Suite 1236
Sacramento, CA 95814
Phone: 916-444-6816
Fax: 916- 444-8077

Online: www.wsspc.org | Twitter: [@WSSPC](https://twitter.com/WSSPC) | Facebook: www.facebook.com/WSSPC

Questions? Email: news@wsspc.org